

MOJOSOUP

Connected brilliance.

PPM Unleashed

Microsoft PPM and AI applications in PPM



Sections

Welcome

Microsoft Project Overview

Features and Enhancements

AI in PPM

Wrap up



Welcome



connected brilliance.

Welcome

Microsoft Project Overview



connected brilliance.

PROPOSED PROJECTS

Pp

Project	Priority	Total Cost
Campus Recycling	7.94%	\$110,000.00
Waste-to-Energy Plan	8.4%	\$170,000.00
Greening the Supply Chain	12.1%	\$997,220.00
Solar Energy Pilot	13.06%	\$530,000.00
Wind Energy Project	3.86%	\$150,000.00
Leed Construction Options	1.69%	\$400,000.00

BUSINESS DRIVERS

Bd

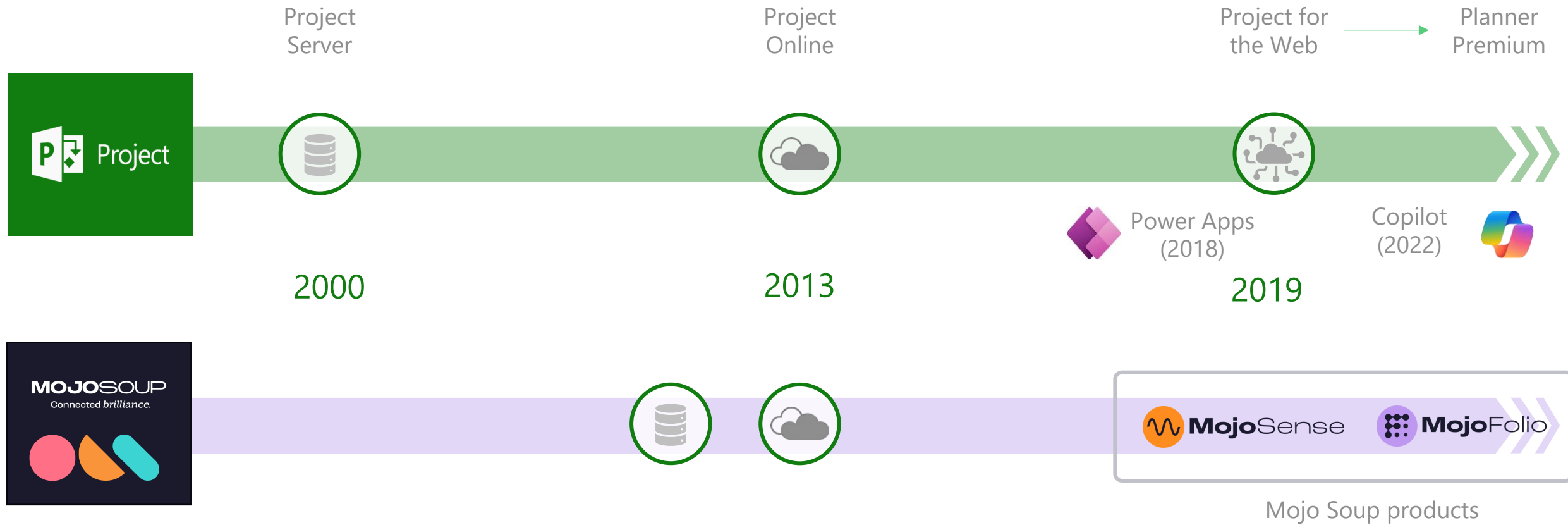
Driver	Priority
Increase Market Share in Existing Markets	31.44%
Corporate Social Responsibility	29.85%
Improve Product Quality	10.41%
Reduce Expense Base	6.50%
Improve Customer Satisfaction Score	6.40%

M

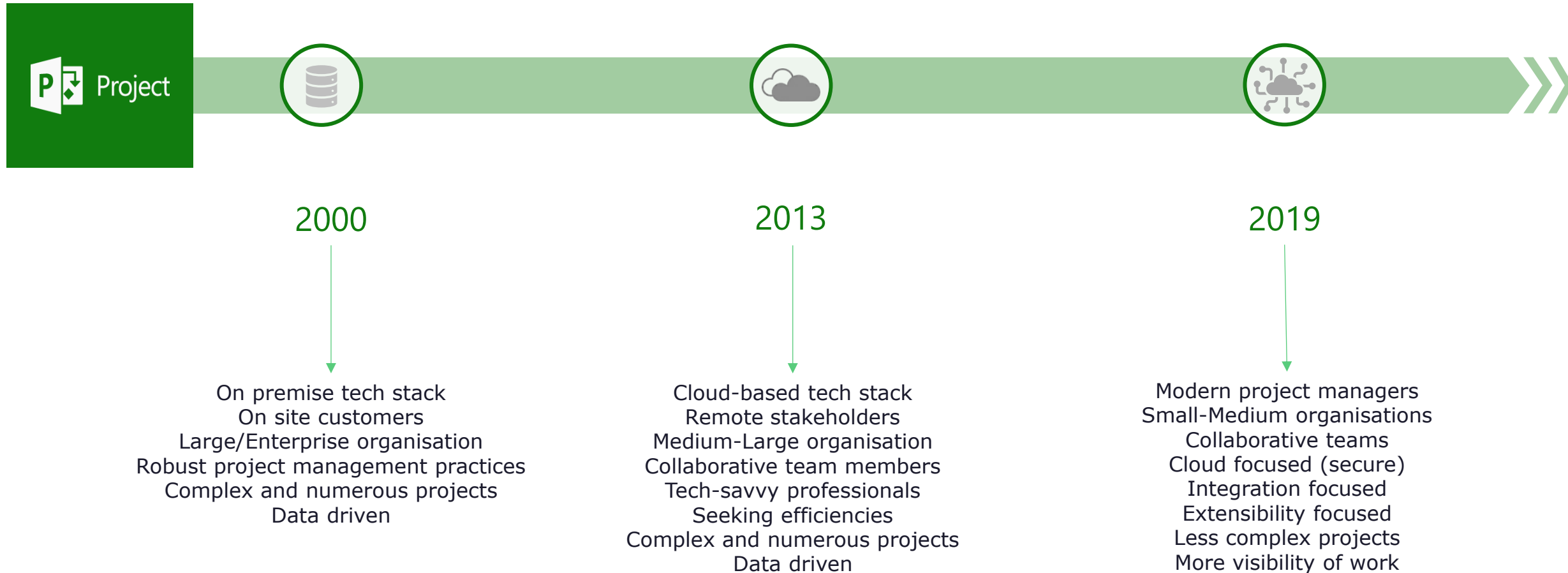
COMPARISON



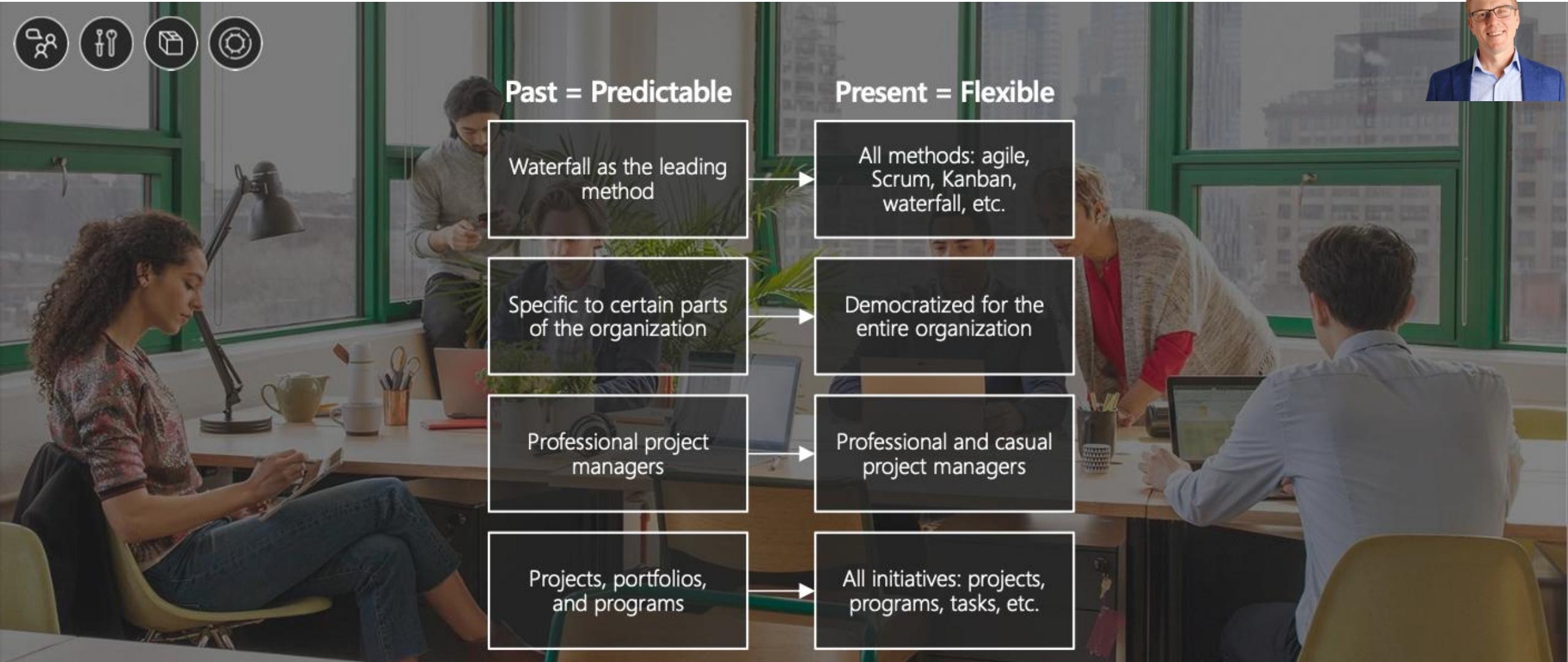
What are Microsoft's PPM solution offerings?



Customer alignment



Evolution of project & portfolio management (PPM)



Current ecosystem

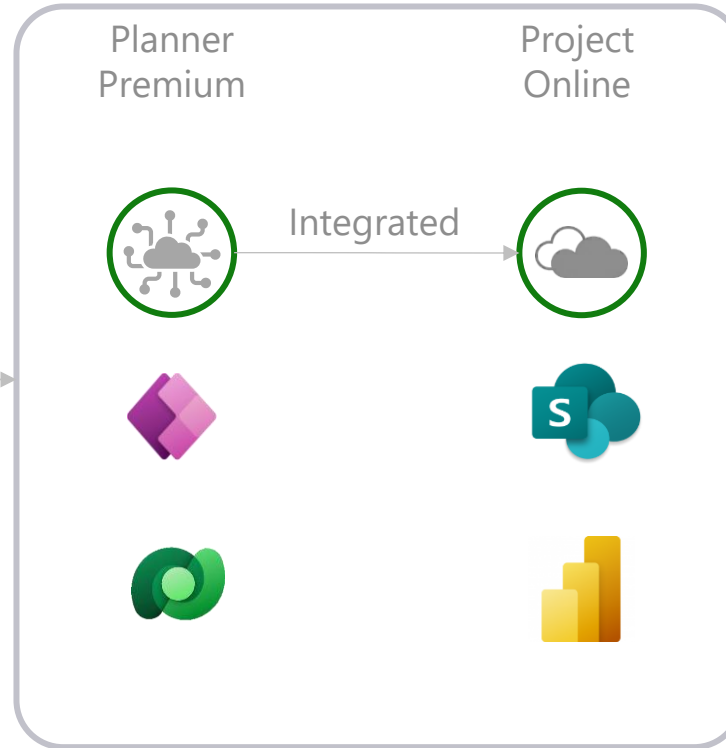


Work & Project Management + Complex Project Management

Distributed Users



Collaboration



Line of Business Applications



Current ecosystem (Mojo Soup)

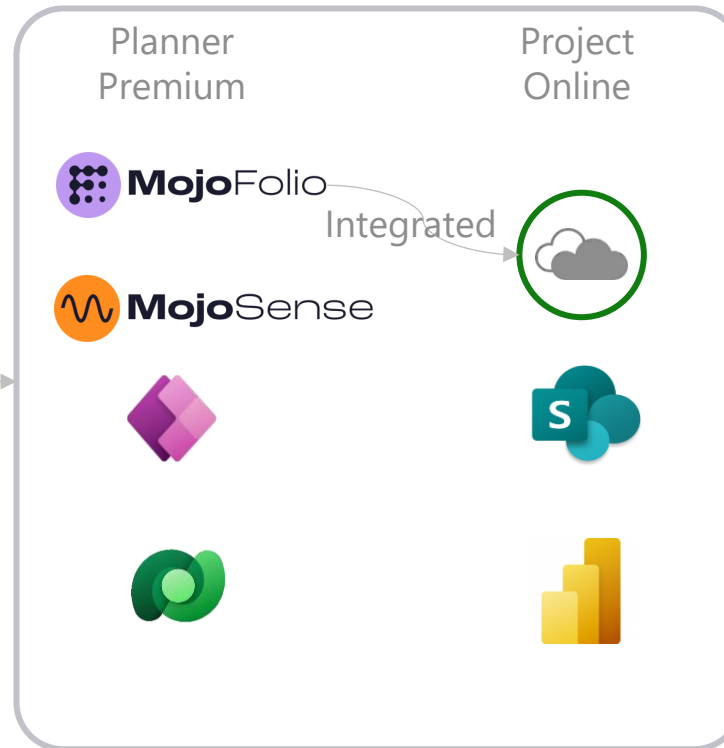


Work & Project Management + Complex Project Management

Distributed Users



Collaboration



Line of Business Applications



Welcome

Microsoft Project Overview

Features and Enhancements



connected brilliance.

Welcome!



Microsoft

Roadmap



Some noteworthy features rolled out recently

User Experience focused releases

- New Planner App for Teams
- Create personal plans in Planner
- Manage all tasks in My Tasks

User Efficiencies

- Copilot in Planner
- Baseline functionality
- Auto population of due tasks
- Email notifications for late project tasks



November

- Portfolio Capabilities
- Baseline with Task level variance

December

Unified Planner tab in Teams

February

- More tasks (3000)
- More dependencies (2000)

Some noteworthy features coming soon...

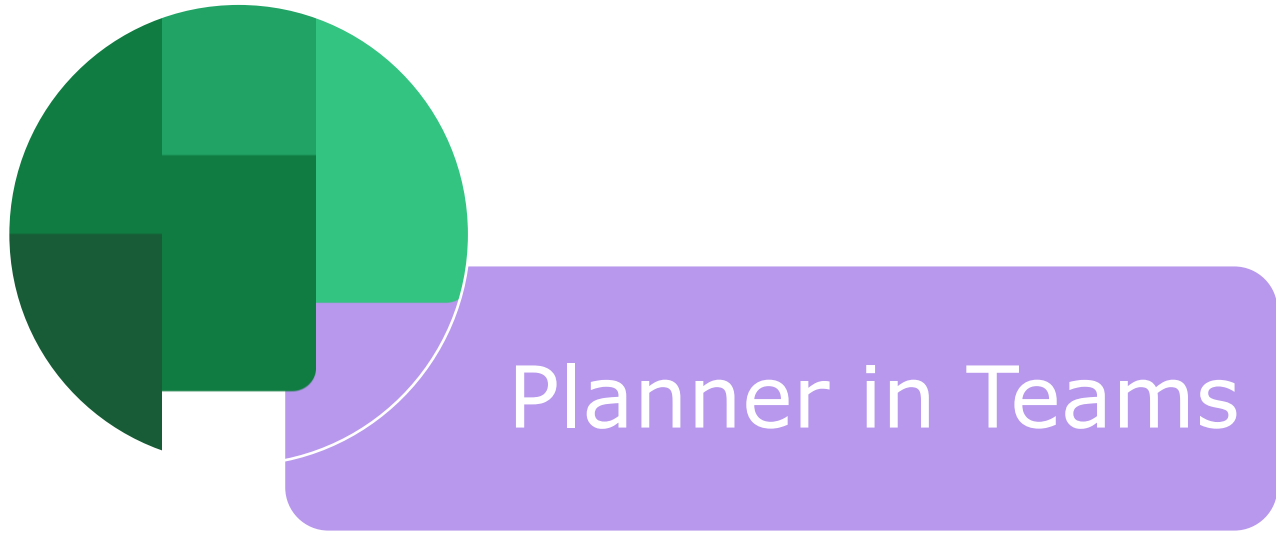
Mojo Folio backlog



- AI functionality
- Permissions handling
- Finance management
- Timesheeting
- Contract management
- Enhanced report set

- Upgrade UI
- Enhanced Integration
- Contract Management

Demo



Functionality showcase

- ✓ Access to all work
- ✓ Portfolios
- ✓ Roadmap
- ✓ Planner Premium features
 - ✓ Grid/Board/Timeline
 - ✓ Assignments
 - ✓ Baseline
 - ✓ Dependencies
 - ✓ Chat
 - ✓ Goals

Welcome

Microsoft Project Overview

Features and Enhancements

AI in PPM



connected brilliance.

AI in the PPM Market



PPM solutions in the market are focused on AI driven value through some common use cases



EFFICIENCY

- ✓ Optimise resource allocation
- ✓ Task prioritisation
- ✓ Decreased manual intervention



COST REDUCTION

- ✓ Improved decision making
- ✓ Enhanced forecasting
- ✓ Scenario planning



INCREASE SUCCESS RATES

- ✓ Improved strategic alignment
- ✓ Proactive risk management

AI Use Cases

Project Portfolio Management



In the Project Portfolio Management domain AI can be applied to enable a wide array of optimisations, automations and risk management approaches.

Predictive Analytics

Analyse historical project data to predict the likelihood of project success or failure and provide early warnings about risks

Resource Optimisation

Analyse workloads, skillsets, and project requirements to suggest the best-fit resources for tasks and recommend adjustments

Risk Management and Mitigation

Identify potential risks based on data from past projects, market trends, or other external factors and flag in real-time for proactive mitigation

Automated Scheduling

Analyse changes in scope, resources, and external factors to dynamically adjust timelines and suggest optimisations

Demand Forecasting

Predict future project demand based on market conditions, historical data, and organisational trends

Portfolio Prioritisation

Assist in prioritising projects by incorporating ML into project data analysis (such as cost, benefits, risks, strategic objectives, etc.)

Automated Reporting

Generate real-time, data-driven project and portfolio reports, customised to stakeholders' needs

Sentiment Analysis

Analyse team feedback and communication channels to assess team morale, satisfaction, or adoption issues

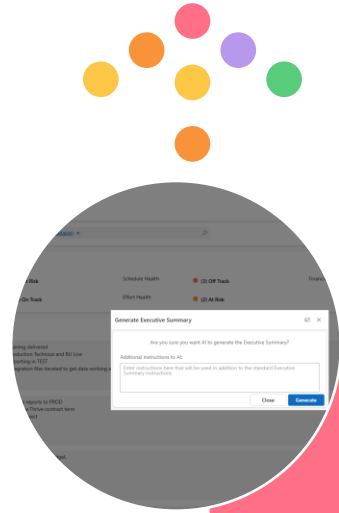
Enhance Collaboration

Facilitate knowledge sharing within team by identifying relevant documents, past projects, and expert resources

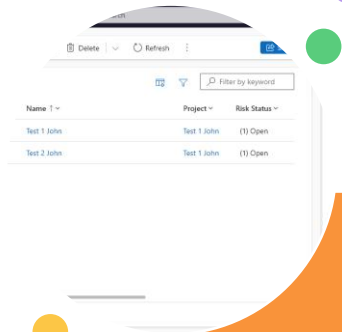
Scenario Analysis

Perform "what-if" simulations to predict impacts of difference project decisions to help managers choose the most effective course of action

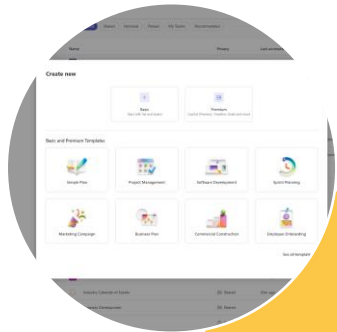
Demo AI



Exec Summary
(AI Builder)



Soup Chef
(Azure AI)



Copilot in
Planner

Functionality showcase

Copilot

- ✓ Automated scheduling

Soup Chef

- ✓ AI Guided Help

Executive Summary

- ✓ Automated reporting

Welcome

Microsoft Project Overview

Features and Enhancements

AI in PPM




Wrap up

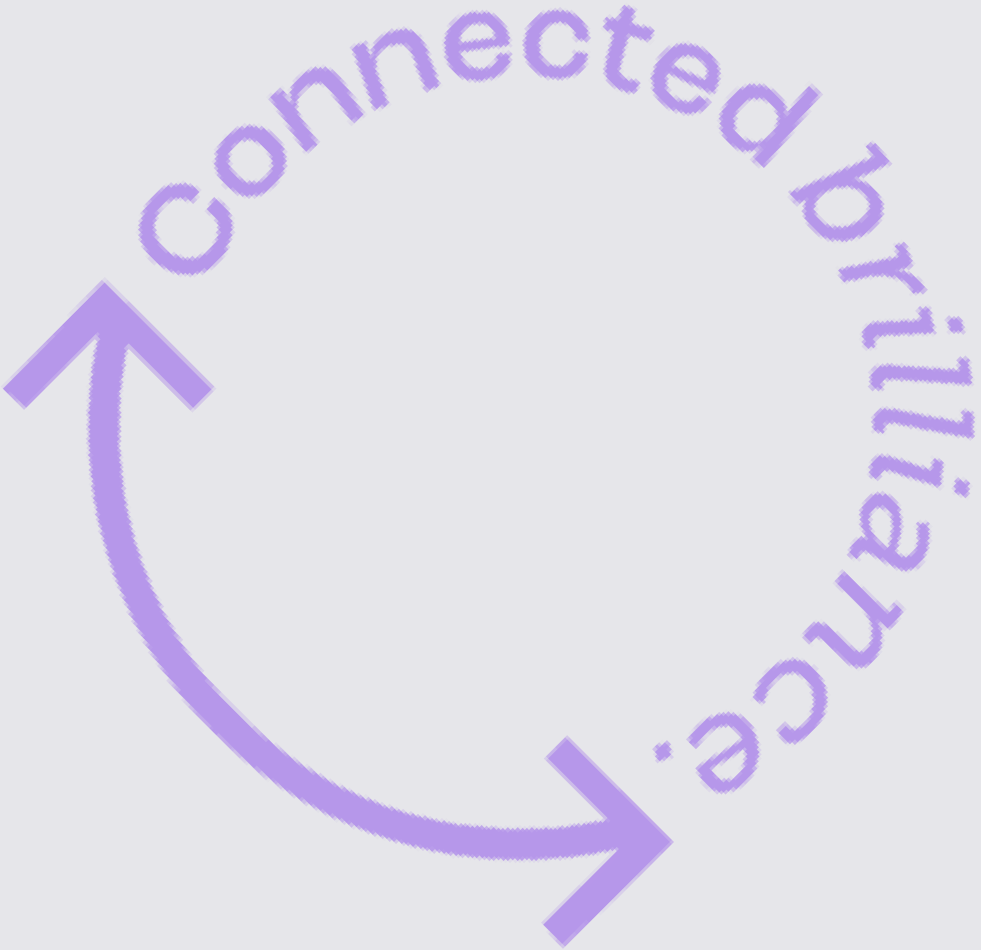


connected brilliance.

Wrap up



- Microsoft Project Overview 
- Features and Enhancements 
- AI in PPM 



Wrap up



Mojo Folio Extended Demo - Free

Mojo Spark Workshop - \$3k



Mojo Spark Workshop



What we're hearing in the market:

"I'm having trouble **getting everyone on the same page.**"

"We can define the problem, but we're not sure how to go about solving it."

"We have an idea of what a solution might be but need help **validating high-level scope** and what the **next steps** will be."

"We want to start **dipping our toes into AI** but feel like it's too far out of reach."

"Our **outdated applications** are holding us back."

"My department has a **specific technical problem** that the team has been **stuck on.**"

"We're interested in **automation** but we're **unsure of where to start.**"

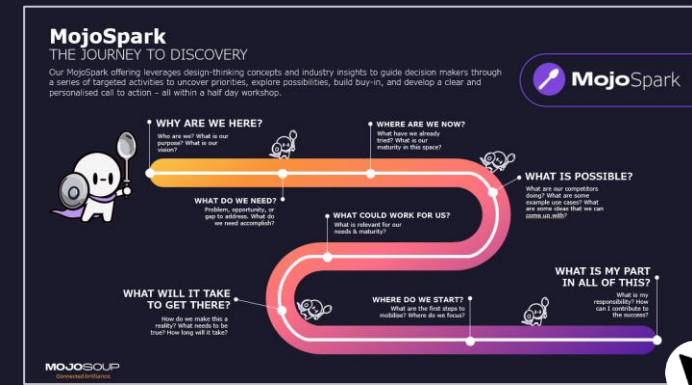
"We're trying to **streamline our business processes** but we're **not sure where to focus** for maximum impact"

Our solution:



MojoSpark

MojoSpark is a half-day workshop for decision makers to explore strategic technology possibilities, what might work for their business, and how to get started.



MojoSpark

THE JOURNEY TO DISCOVERY

Our MojoSpark offering leverages design-thinking concepts and industry insights to guide decision makers through a series of targeted activities to uncover priorities, explore possibilities, build buy-in, and develop a clear and personalised call to action – all within a half day workshop.



MojoSpark



WHY ARE WE HERE?

Who are we? What is our purpose? What is our vision?



WHERE ARE WE NOW?

What have we already tried? What is our maturity in this space?



WHAT IS POSSIBLE?

What are our competitors doing? What are some example use cases? What are some ideas that we can come up with?

WHAT DO WE NEED?

Problem, opportunity, or gap to address. What do we need accomplish?

WHAT COULD WORK FOR US?

What is relevant for our needs & maturity?

WHAT IS MY PART IN ALL OF THIS?

What is my responsibility? How can I contribute to the success?

WHAT WILL IT TAKE TO GET THERE?

How do we make this a reality? What needs to be true? How long will it take?

WHERE DO WE START?

What are the first steps to mobilise? Where do we focus?



MojoSpark

THE JOURNEY TO DISCOVERY

Our MojoSpark offering leverages design-thinking concepts and industry insights to guide decision makers through a series of targeted activities to uncover priorities, explore possibilities, build buy-in, and develop a clear and personalised call to action – all within a half-day to full-day workshop.

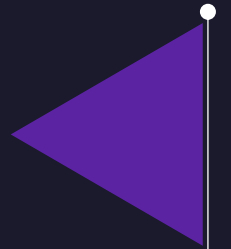


MojoSpark



Potential workshop outputs:

1. A list of potential use cases for further exploration
2. Roadmap of prioritised initiatives
3. A deeper understanding of “what’s possible”
4. Stakeholder alignment of priorities





MOJOSOUP

Connected *brilliance.*